

ESCOLA: _____

NOME: _____

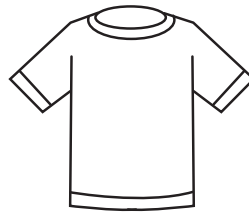
PROFESSOR: _____ DATA: ___/___/___



SÍLABAS

1 - ASSINALE A PALAVRA QUE COMPLETA CADA FRASE, SUBSTITUINDO O DESENHO.

LAURA GOSTOU DA



PESQUISA

CAMISA

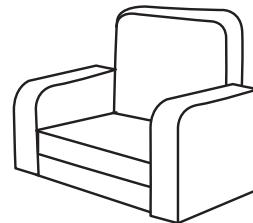
JULIO LAVOU UM PAR DE



SAPATOS

PATOS

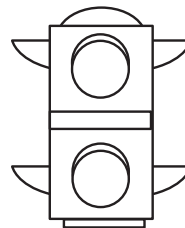
A VOVÓ DESCANSOU NO



SOBRADO

SOFÁ

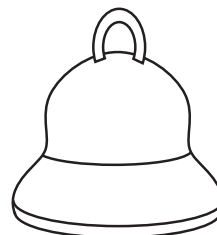
MEU PAI PAROU NO



FÓSFORO

SEMÁFORO

O MENINO TOCOU O



SINO

SAPO